

Anti-TFPI2 Antibody
Catalog # ABO10624**Specification**

Anti-TFPI2 Antibody - Product Information

Application	WB, IHC-P
Primary Accession	P48307
Host	Rabbit
Reactivity	Human
Clonality	Polyclonal
Format	Lyophilized

Description

Rabbit IgG polyclonal antibody for Tissue factor pathway inhibitor 2(TFPI2) detection. Tested with WB, IHC-P in Human.

Reconstitution

Add 0.2ml of distilled water will yield a concentration of 500ug/ml.

Anti-TFPI2 Antibody - Additional Information

Gene ID 7980

Other Names

Tissue factor pathway inhibitor 2, TFPI-2, Placental protein 5, PP5, TFPI2

Calculated MW

26934 MW KDa

Application Details

Immunohistochemistry(Paraffin-embedded Section), 0.5-1 µg/ml, Human, By Heat
Western blot, 0.1-0.5 µg/ml, Human

Subcellular Localization

Secreted.

Tissue Specificity

Umbilical vein endothelial cells, liver, placenta, heart, pancreas, and maternal serum at advanced pregnancy.

Protein Name

Tissue factor pathway inhibitor 2(TFPI-2)

Contents

Each vial contains 5mg BSA, 0.9mg NaCl, 0.2mg Na₂HPO₄, 0.05mg Thimerosal, 0.05mg NaN₃.

Immunogen

A synthetic peptide corresponding to a sequence in the middle region of human TFPI2(170-186aa NVTRYFNPRTYRTDAF).

Purification

Immunogen affinity purified.

Cross Reactivity

No cross reactivity with other proteins

Storage

At -20°C for one year. After reconstitution, at 4°C for one month. It can also be aliquotted and stored frozen at -20°C for a longer time. Avoid repeated freezing and thawing.

Anti-TFPI2 Antibody - Protein Information**Name** TFPI2**Function**

May play a role in the regulation of plasmin-mediated matrix remodeling. Inhibits trypsin, plasmin, factor VIIa/tissue factor and weakly factor Xa. Has no effect on thrombin.

Cellular Location

Secreted.

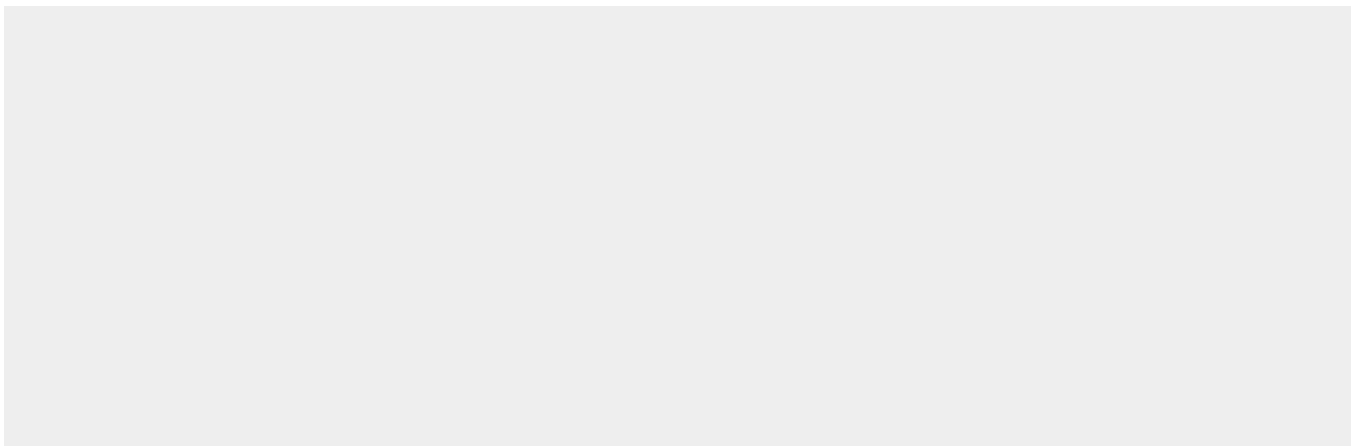
Tissue Location

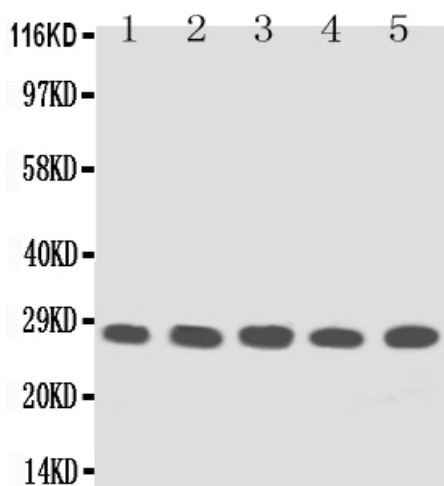
Umbilical vein endothelial cells, liver, placenta, heart, pancreas, and maternal serum at advanced pregnancy

Anti-TFPI2 Antibody - Protocols

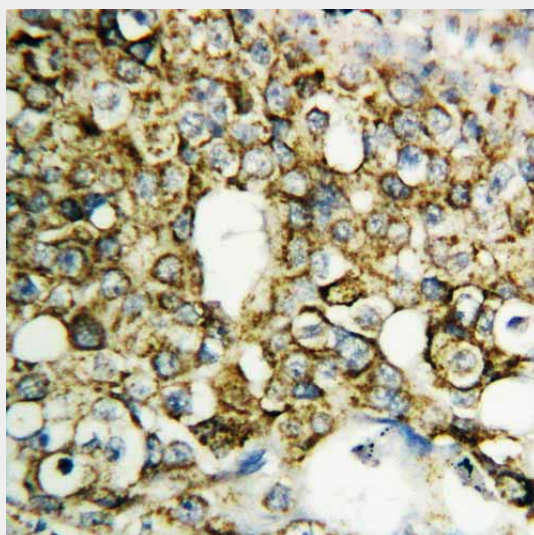
Provided below are standard protocols that you may find useful for product applications.

- [Western Blot](#)
- [Blocking Peptides](#)
- [Dot Blot](#)
- [Immunohistochemistry](#)
- [Immunofluorescence](#)
- [Immunoprecipitation](#)
- [Flow Cytometry](#)
- [Cell Culture](#)

Anti-TFPI2 Antibody - Images



Anti-TFPI2 antibody, ABO10624, Western blotting
Lane 1: MM453 Cell Lysate
Lane 2: MM231 Cell Lysate
Lane 3: HELA Cell Lysate
Lane 4: HT1080 Cell Lysate
Lane 5: JURKAT Cell Lysate



Anti-TFPI2 antibody, ABO10624, IHC(P)
IHC(P): Human Mammary Cancer Tissue

Anti-TFPI2 Antibody - Background

Tissue factor pathway inhibitor 2, also known as TFPI2, is a human gene which is located at 7q22. It is an important regulator of the extrinsic pathway of blood coagulation through its ability to inhibit factor Xa and factor VIIa-tissue factor activity. After a 22-residue signal peptide, the mature TFPI2 protein contains 213 amino acids with 18 cysteines and 2 canonical N-linked glycosylation sites. The purified recombinant TFPI2 strongly inhibited the amidolytic activities of trypsin and the factor VIIa-tissue factor complex. The latter inhibition was markedly enhanced in the presence of heparin. Mouse TFPI2 mRNA is highly expressed in developing mouse placenta, as in human. And there are also high transcript levels in adult mouse liver and kidney.